



UCS-CLOUD Solutions



Monitoring systems for continuous and remote monitoring of sensors, providing you with data from your sensors and devices for the purpose of monitoring, diagnostics, and deeper analysis of your equipment and outputs.



module **UCS-X1/X2**



Diagnostics and prediction

Continuous monitoring provides data that inform about trends and the state of your installation. You gain thereby control and certainty over its condition.

24/7 access

The solution utilizes cloud services, allowing you secure access to your data 24/7 from a laptop, tablet, or mobile phone.

Time and cost savings

Monitoring always brings time and cost savings by minimizing unexpected downtime and faults.



UCS-CLOUD is the core of the entire system, securely storing all monitored data. Access to the data is enabled from anywhere, 24/7, via a dashboard or integration with custom applications using the REST API interface.

Industry-specific solutions



SensWEIGHT

For bridge scales, belt scales, and other types of weighing devices and technological units, we offer efficient solutions for both economic and technical departments. Through deeper analysis of outputs, it's possible to monitor process efficiency and obtain real-time data. With diagnostics and monitoring of parameters of load cells, it's possible to predict maintenance needs and propose timely actions, thereby helping to prevent unnecessary call-outs and downtime. UCS provides comprehensive solutions for optimizing weighing and ensuring smooth operations.



SensSILO

Silos used for storing various materials, regardless of the industry they operate in, require regular weighing to monitor content. SensSILO provides a comprehensive solution that not only enables remote content monitoring but also monitors parameters of load cells to ensure efficient maintenance. For solutions with analog load cells, the SensSILO Connect Kit is available, allowing connection of these sensors and remote monitoring.



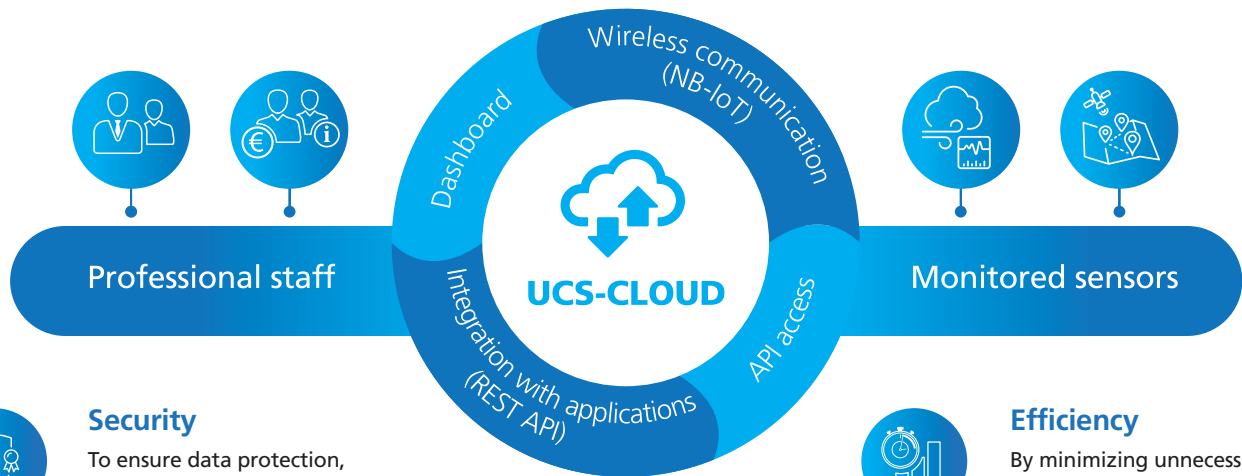
SensATMO

Atmospheric variables such as air temperature, soil temperature, atmospheric pressure, air humidity, soil humidity, etc., and the content of toxic substances in the air, are key parameters used in both agriculture and industry. Their continuous monitoring plays a crucial role in many processes, contributing to output optimization and ensuring efficient management.



SensGEO

In the field of construction and surveying, it's crucial to pay increased attention to safety. Measurements conducted in these areas often require continuous monitoring to capture any changes in the measured spaces. SensGEO presents an ideal solution for these measurements, offering secure implementation and reliable sensing of measured parameters, all without the need for physical presence on-site.



Security

To ensure data protection, data transmission is secured and encrypted to prevent unauthorized access.



Efficiency

By minimizing unnecessary deployments and ensuring timely technical preparation, it is possible to significantly increase the efficiency and safety of work.



Alerts

In case of malfunction or exceeding set limits, a notification will be sent via SMS or email.



REST API

REST API enables integration with various applications, systems, and services by leveraging its architecture.



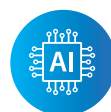
Time and Cost Savings

By preventing downtime and interruptions to work activities, performance and outputs are maximized.



Clarity

Measured values are clearly displayed on the dashboard, which can be viewed on a laptop or other mobile device.



AI integration

Artificial intelligence and machine learning algorithms expand the system with predictions, enabling more precise planning, analysis, and process optimization.



Ecological Consideration

By minimizing work-related trips, a company ensures an environmentally friendly approach.

